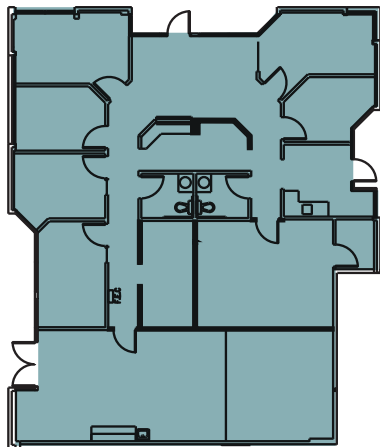


WESTPARK

BUSINESS PARK

15301 NE 90TH STREET
REDMOND, WA

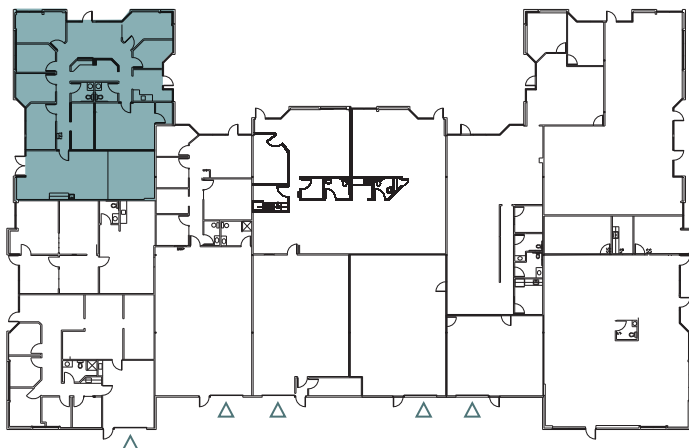
Building Q // Suite 120



2,824 SF
AVAILABLE OFFICE

None
AVAILABLE WAREHOUSE

2,824 SF
TOTAL AVAILABLE



- △ GRADE LEVEL
- ▲ DOCK HIGH

FOR LEASING INFORMATION CONTACT

MARK FLIPPO
JLL
425.974.4007
mark.flippo@am.jll.com

JASON BLOOM
Kidder Mathews
425.450.1102
jason.bloom@kidder.com

OWNED BY



PACIFIC OAK

WESTPARKREDMOND.COM

This information supplied herein is from sources we deem reliable. It is provided without any representation, warranty or guarantee, expressed or implied as to its accuracy. Prospective Buyer or Tenant should conduct an independent investigation and verification of all matters deemed to be material, including, but not limited to, statements of income and expenses. Consult your attorney, accountant, or other professional advisor.

