

WESTPARK

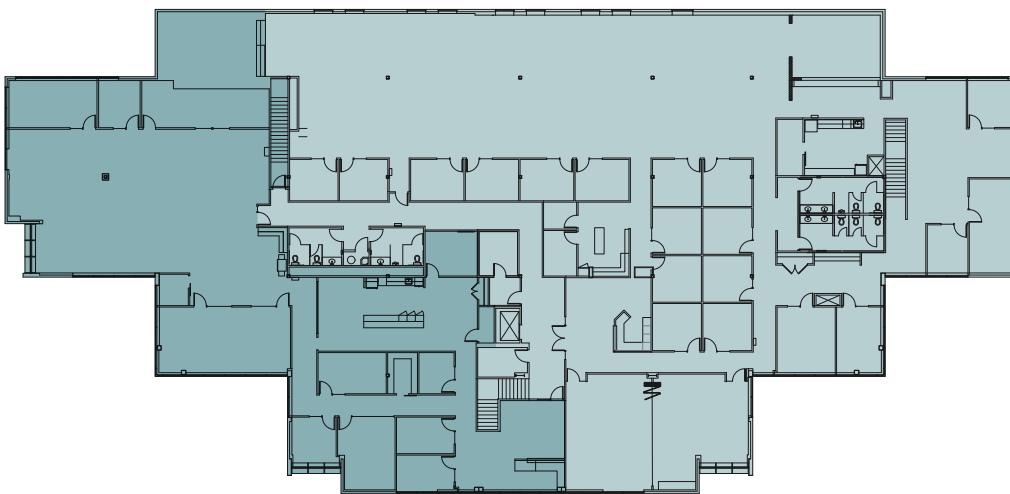
BUSINESS PARK

8271 154TH AVE NE
REDMOND, WA

Building D // Suite 200/250

SUITE 200
7,715 SF

SUITE 250
14,910 SF



22,625 SF

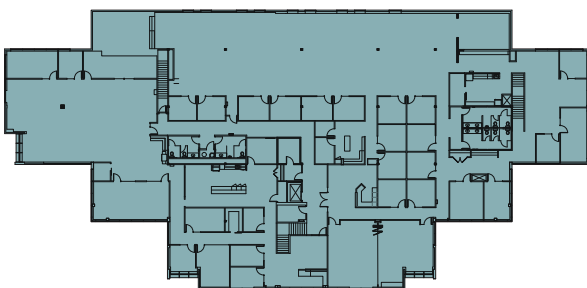
TOTAL AVAILABLE OFFICE

7,715 SF

SUITE 200 DIVISIBLE

14,910 SF

SUITE 250 DIVISIBLE



FOR LEASING INFORMATION CONTACT

MARK FLIPPO
JLL
425.974.4007
mark.flippo@am.jll.com

JASON BLOOM
Kidder Mathews
425.450.1102
jason.bloom@kidder.com

OWNED BY



PACIFIC OAK

WESTPARKREDMOND.COM

This information supplied herein is from sources we deem reliable. It is provided without any representation, warranty or guarantee, expressed or implied as to its accuracy. Prospective Buyer or Tenant should conduct an independent investigation and verification of all matters deemed to be material, including, but not limited to, statements of income and expenses. Consult your attorney, accountant, or other professional advisor.

