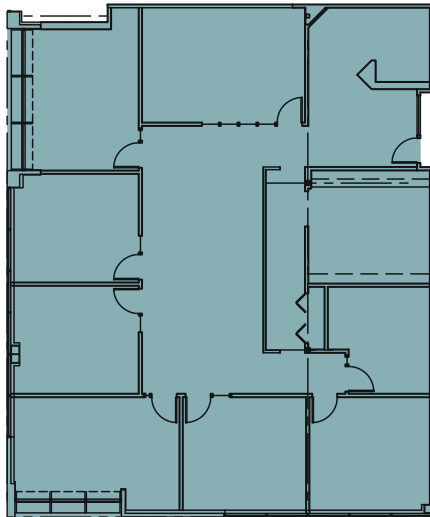


# WESTPARK

BUSINESS PARK

8561 154TH AVENUE NE  
REDMOND, WA

## Building J // Suite 240



3,354 SF

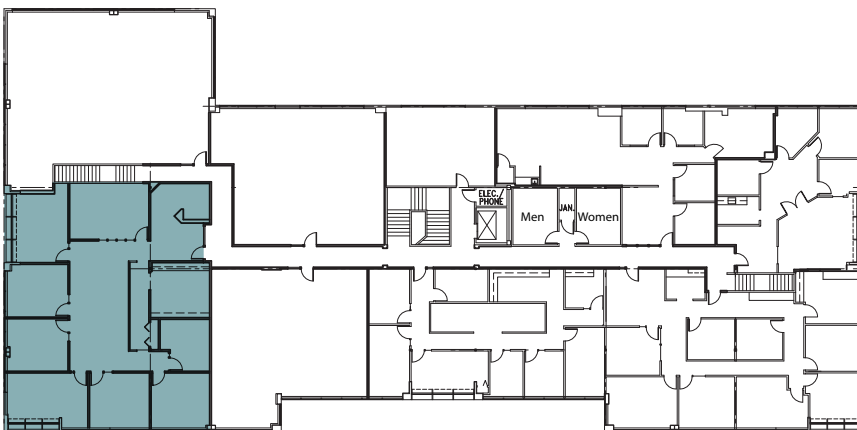
AVAILABLE OFFICE

None

AVAILABLE WAREHOUSE

3,354 SF

TOTAL AVAILABLE



### FOR LEASING INFORMATION CONTACT

**MARK FLIPPO**

JLL  
425.974.4007  
mark.flippo@am.jll.com

**JASON BLOOM**

Kidder Mathews  
425.450.1102  
jason.bloom@kidder.com



PACIFIC OAK

WESTPARKREDMOND.COM

This information supplied herein is from sources we deem reliable. It is provided without any representation, warranty or guarantee, expressed or implied as to its accuracy. Prospective Buyer or Tenant should conduct an independent investigation and verification of all matters deemed to be material, including, but not limited to, statements of income and expenses. Consult your attorney, accountant, or other professional advisor.

