

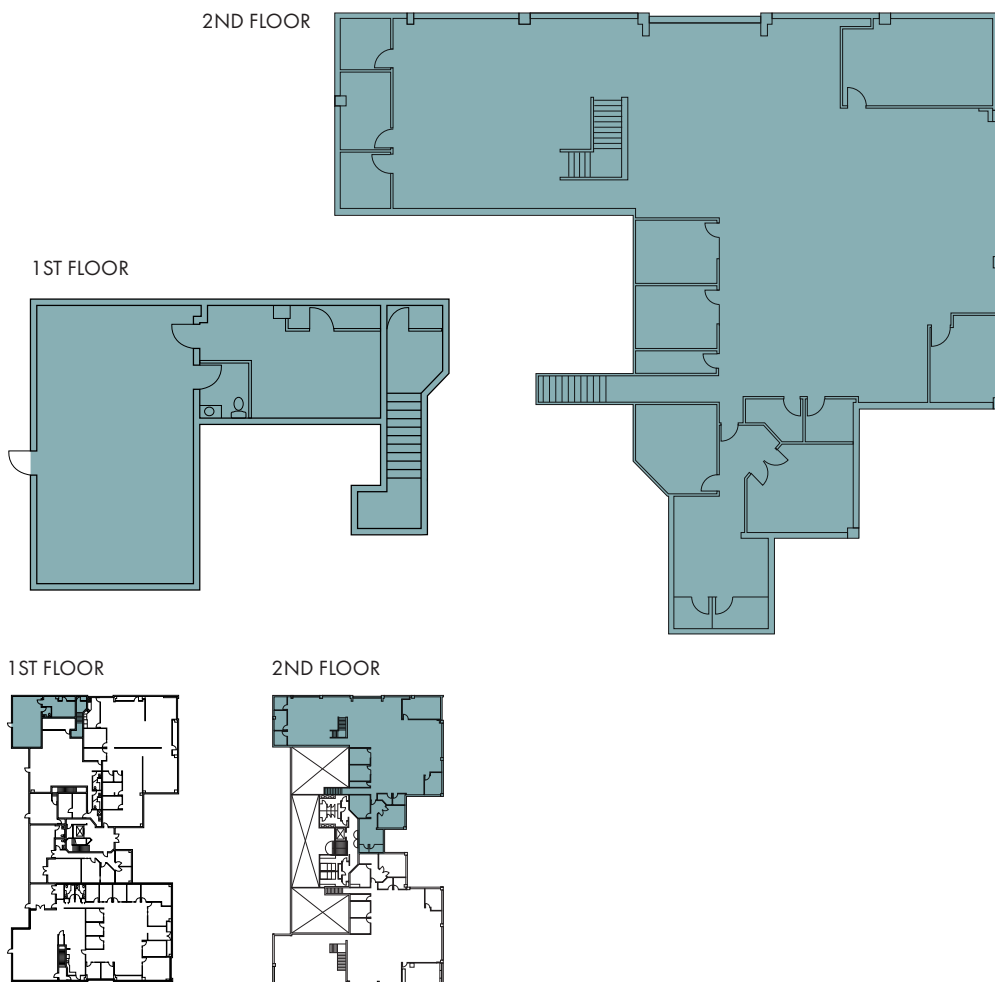
# WESTPARK

BUSINESS PARK

15365 NE 90TH ST  
REDMOND, WA

## Building T // Suite 200

8,838 SF  
AVAILABLE OFFICE



### FOR LEASING INFORMATION CONTACT

**MARK FLIPPO**  
JLL  
425.974.4007  
mark.flippo@am.jll.com

**JASON BLOOM**  
Kidder Mathews  
425.450.1102  
jason.bloom@kidder.com

### OWNED BY



PACIFIC OAK

WESTPARKREDMOND.COM

This information supplied herein is from sources we deem reliable. It is provided without any representation, warranty or guarantee, expressed or implied as to its accuracy. Prospective Buyer or Tenant should conduct an independent investigation and verification of all matters deemed to be material, including, but not limited to, statements of income and expenses. Consult your attorney, accountant, or other professional advisor.

